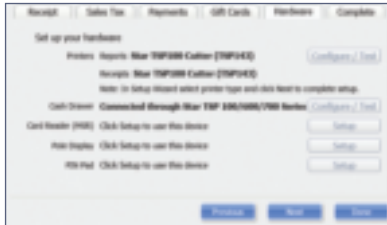


Important! Intuit QuickBooks Point of Sale software must be installed before connecting your hardware. If you don't have your installation CD, driver files are available at <http://support.quickbooks.intuit.com>

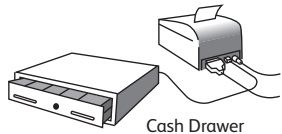
The keys are taped to your cash drawer.



Hardware Setup and Installation

Important: A 40-column receipt printer compatible with the cash drawer must be installed first.

1. Unlock the cash drawer.
2. Launch Point of Sale. Select **Hardware Setup Wizard** from the **File** menu and go to the **Cash Drawer** setup screen.
3. Follow the onscreen instructions to select your receipt printer and cash drawer connection preferences.
4. To connect the cash drawer:
The cash drawer cable looks like a telephone cable. One end connects to the cash drawer. The other end plugs into the back of the receipt printer.
5. Select **Test the Cash Drawer** to test your cash drawer setup.



Cash Drawer

Representative images only; actual product may vary.